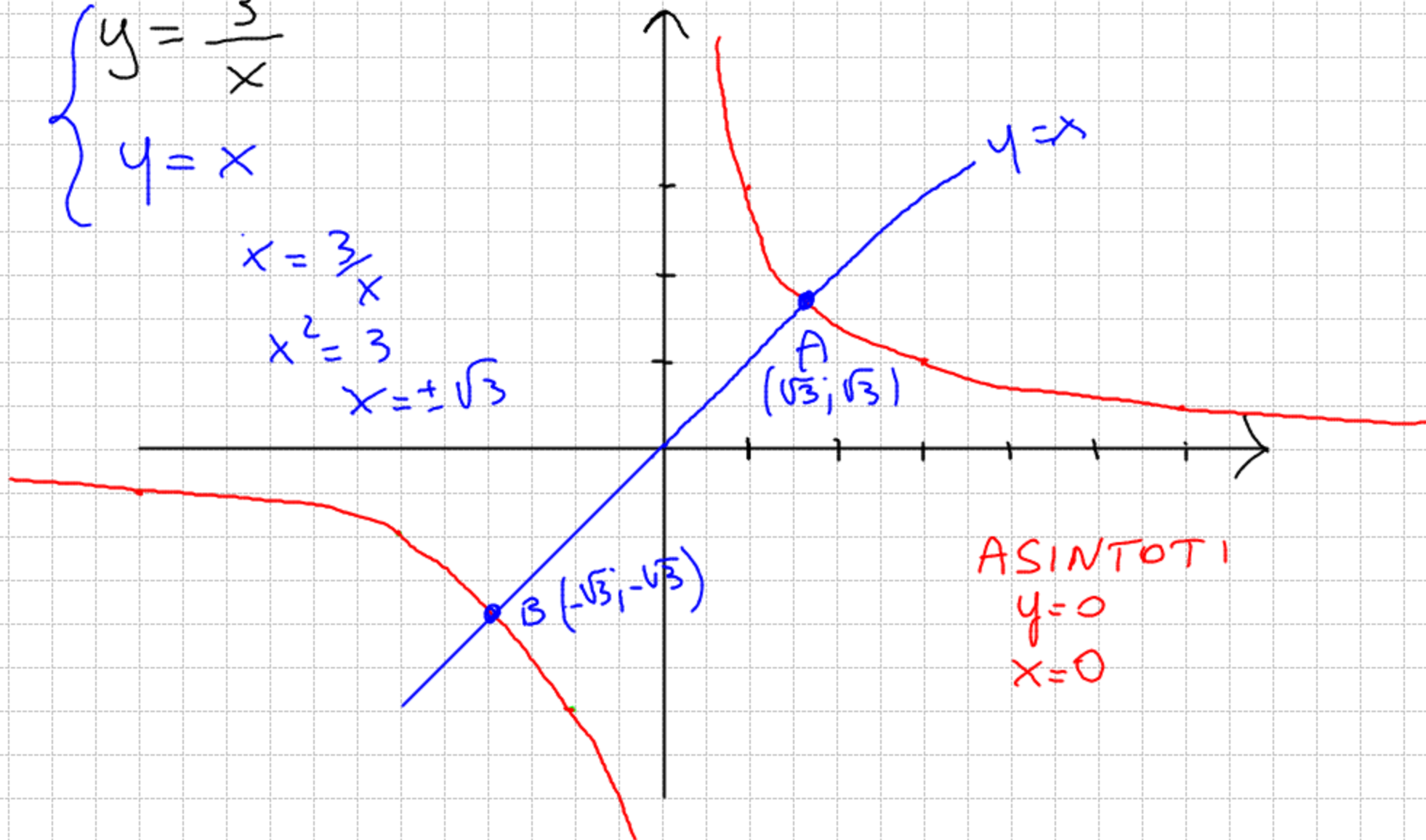


$$\begin{cases} y = \frac{3}{x} \\ y = x \end{cases}$$

$$\begin{aligned} x &= \frac{3}{x} \\ x^2 &= 3 \\ x &= \pm\sqrt{3} \end{aligned}$$



ASINTOTI  
 $y=0$   
 $x=0$

x	y
1	3
3	1
$\frac{1}{2}$	6
6	$\frac{1}{2}$
-1	-3
-3	-1
$-\frac{1}{2}$	-6
-6	$-\frac{1}{2}$

Per domani si segnare:

$$y = -\frac{4}{x}$$

e trovare le intersezioni  
 con la retta  $y = 2x$